



stop silent Reservoirs

(Case-studies)

The Gallisloch spring

In the pumping station of Baselländer's largest freshwater source:

Having a look at the installation of a Stop Silent check valve.

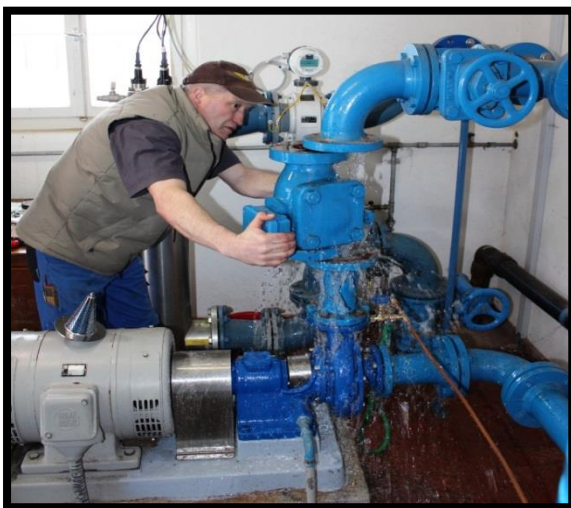
Lasso Technik visited the municipality of Oltingen in the Upper Basel region in mid-March. The village of 500 souls owns one of the largest freshwater springs in Canton Baselland: the Gallisloch spring.

The normal flow rate of this source is on average 18 litres per second. At peak times up to 40l/s!

In the course of a revision of the pumping station, the leaking check-valves were replaced. Instead of installing the same model, two Stop Silent non-return valves were installed. Rolf Gysin, fountain master from Oltingen, and Anton Graf, owner of Graf Pumpenservice & Metallbau, underline **the advantages of the Stop Silent valves**: In addition to the silent closing of the rubber membrane, the easy-care maintenance of the system is highlighted.

Follow the link to learn more about the assembly and have a unique insight into the spring tapping of the Gallisloch spring. Link for Clip (in German): -> [YouTube](#)

Stop Silent non-return valves are installed in a blink of an eye. Insert the cone, screw on, finished!



Fountainmaster Gysin removes the old valves



Mounting the Stop Silent valve in between the flanges

Reservoir Riedenweg Nunningen

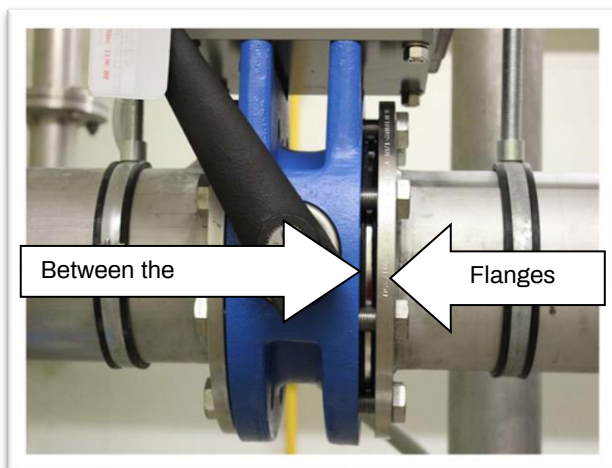
In the middle of January 2013, a Stop Silent AS54 valve for the intermediate flange assembly was installed in the Riedenweg reservoir in Nunningen. This installation was necessary to guarantee backflow prevention between the Riedenweg reservoir and a second reservoir connected to the same water network.

The two plumbers from Spaar Haustechnik in Oensingen installed the valve within a remarkably short time. Compared to conventional check valves, the lightweight design of Stop Silent allows **simple installation** in freely suspended pipe systems **without additional reinforcements**.

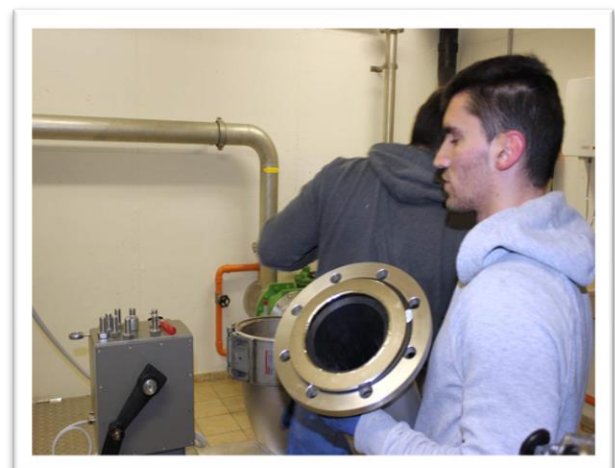


This is also confirmed by Mr. Giovanni D'Aversa of Schmidlin + Partner, Ingenieure und Planer AG. According to him, the Stop Silent valves are regularly used by his company.

This is just one of many possible uses for the Stop Silent check-valve. Stop Silent check-valves are also available with a silicone membrane that meets today's standards for drinking water.



Hardly visible: side view of the built-in AS54 valve



AS54 check valve inserted in pipe



Lasso Technik Corp.
Niklaus von Flüe-Strasse 33
4059 Basel - Switzerland

www.stopsilent.com
lasso@lasso.ch
+41 61 331 40 90