



stop silent

light Active backwater Protection

**Flooded basements? Cost fully renovations of damaged rooms?
No problem for households which are protected by a Stop Silent Light backwater flap**

In addition to insalubrious conditions, a flooded cellar or ruined furniture, it is above all the morale that takes a toll due to the stress and emotional burden caused by this type of accident.

According to the Hartmann family who decided to settle in the municipality of Lupsingen in the canton of Basel-Landschaft (Switzerland), two water sources infiltrated the ground of their cellar in a short period of time due to an unfavourable location (lowest house on the street).

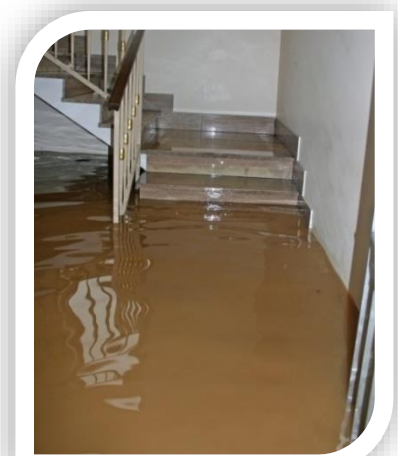
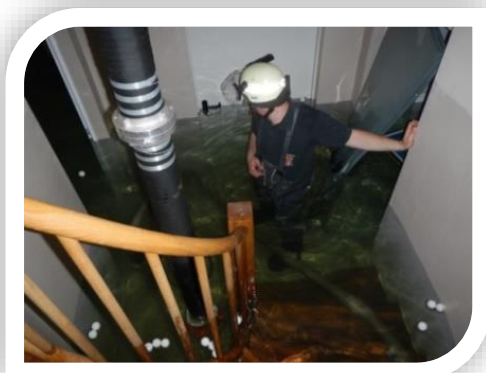
The Hartmann family's experience was due to heavy rains which pushed the sewer systems to the limit of their capacity. When this limit is reached, the water, in search of an exit, pushes back the its flow in the properties

To avoid such surprises, it is recommended to install a Stop Silent Light backflow preventer. Following this event, the backflow protection was installed in the inspection shaft and now protects the family from flooding.

The Stop Silent Light system is installed in a few seconds by means of a clamping mechanism. Depending on the situation, the check-valve can be installed at the inlet or outlet of the inspection shaft. The flexible membrane is very resistant, easy to clean and durable.

At a glance

- Reliable backwater protection
- Airtight odour barrier
- High quality frog and vermin barrier
- Suitable for sewage and rainwater
- Available in the sizes: DN80, 100, 110, 125, 150, 200, 250 and 300 (Bigger sizes on demand)
- Designed for backpressure up to 0,5 bar
- Easy and quick installation without any structural adjustment needed



Lasso Technik Corp.

Niklaus von Flüe-Strasse 33

4059 Basel - Switzerland

www.stopsilent.com

lasso@lasso.ch

+41 61 331 40 90